

Installing the StarCNC software

Download the StarCam and StarCNC software from www.LarkenCNC.com from the downloads area.

The files will come in a ZIP file.

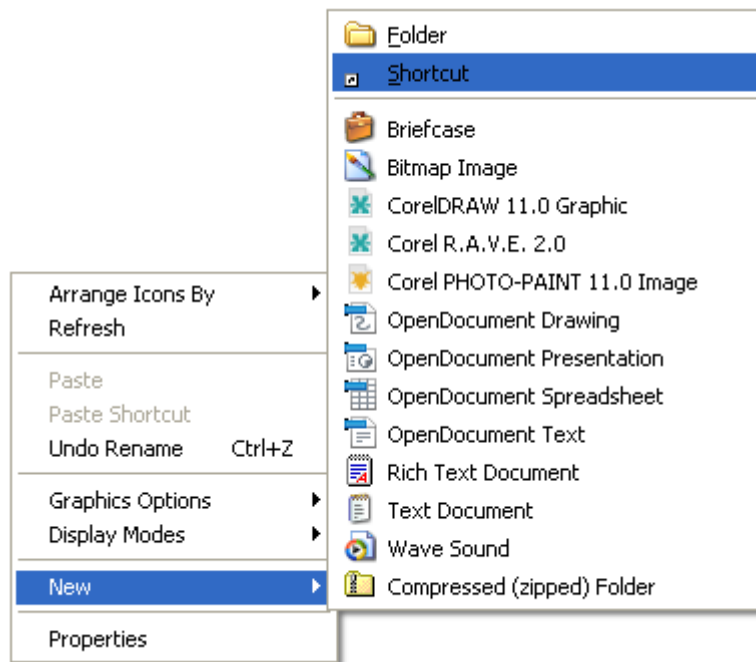
Unzip these files and copy them to the C:\ drive (not on the desktop) so you have 2 folders.

C:\StarCam

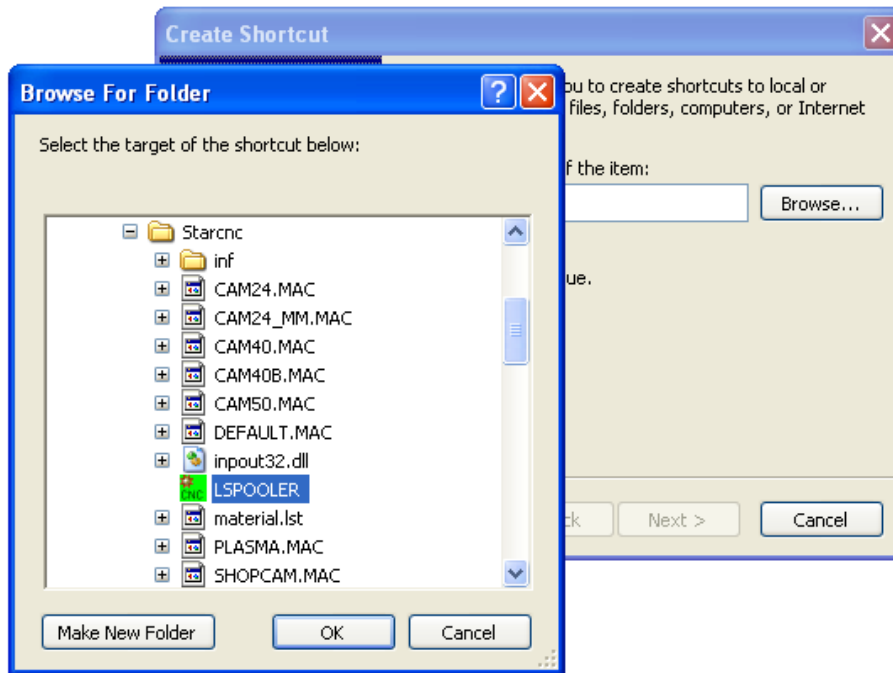
and

C:\StarCNC

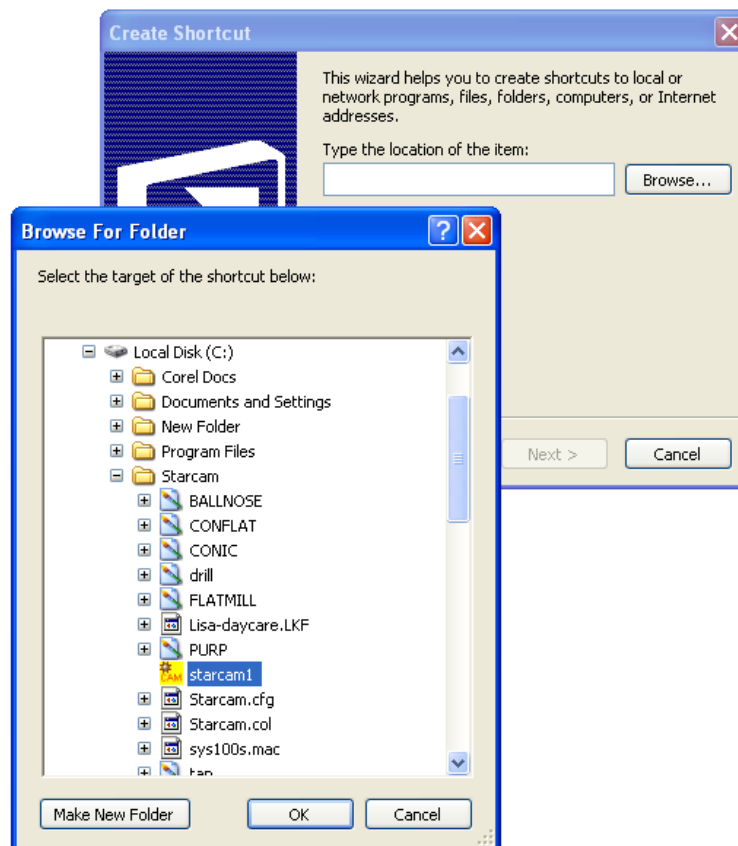
Creating a Icon on the Desktop (Shortcut)



For StarCNC , Select the Lspooler.exe and click OK. Then Finish



For StarCam , select the starcam1.exe and click OK and the Finish.



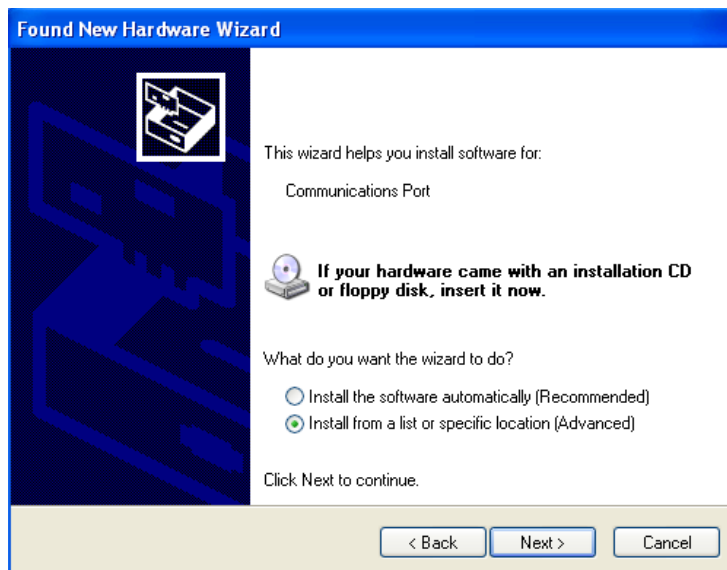
Installing the USB driver for the StarCam controller

Plug the USB cable connecting the PC and the StarCam controller. Windows will show the new hardware wizard to load and configure a driver.

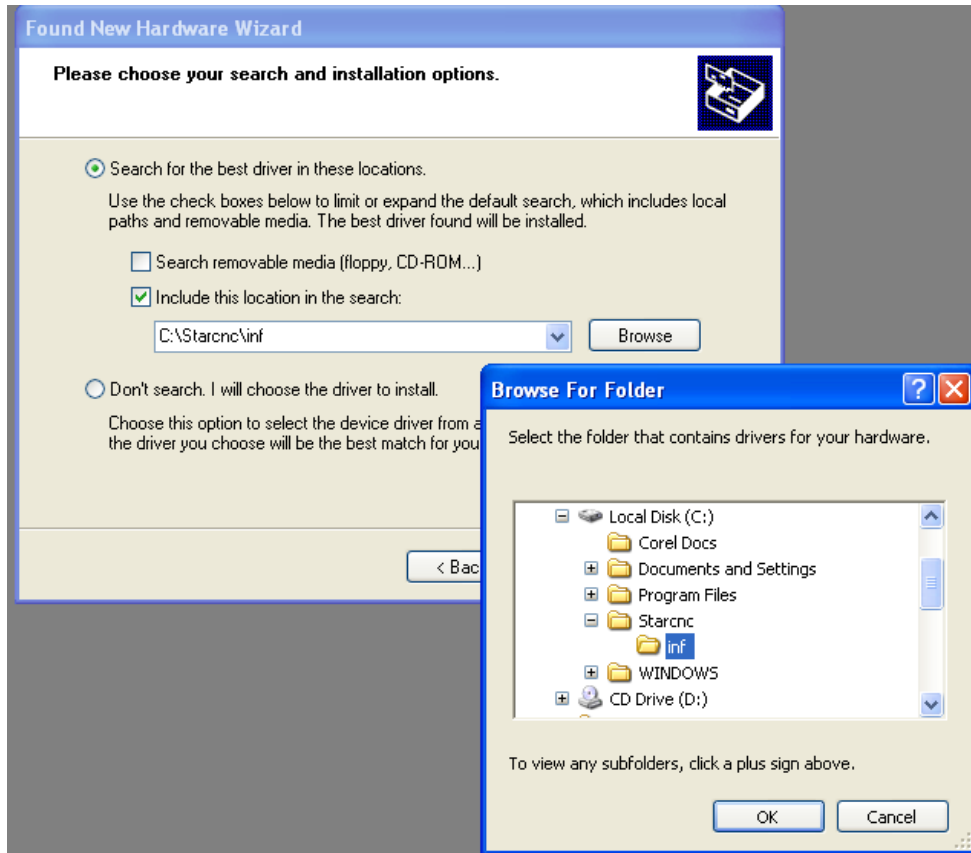
Windows will ask if it can search for a drive. **Select No, Not this Time** and the **Next**



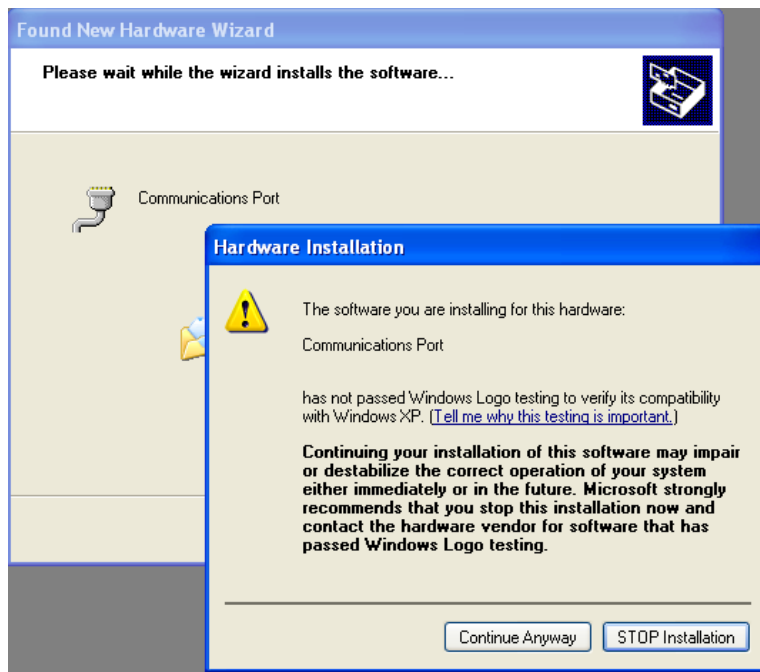
Select, **Install from a Specific location** then select **Next**



Check **Include this Location** and Browse the C drive (where you installed StarCNC) and **select the INF sub directory**. The OK button should become enabled. Press OK.



Windows will warn you that the driver has not been Microsoft Registered, but select **Continue Anyway**



To driver finish installation, click **Finish**

Found New Hardware Wizard



Completing the Found New Hardware Wizard

The wizard has finished installing the software for:



Communications Port

Click Finish to close the wizard.

< Back

Finish

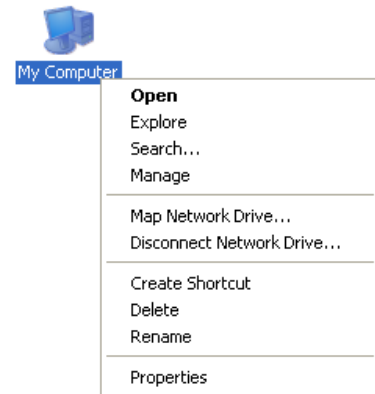
Cancel

Uninstalling a Bad USB driver install

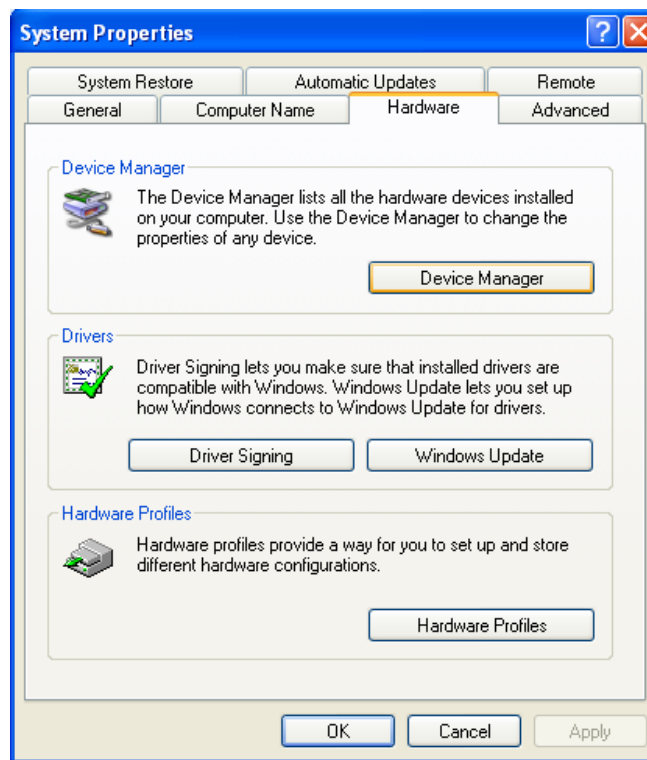
If you have plugged in the USB and let Windows install a random driver, the StarCNC controller will not work. You need to remove this Incorrect driver.

To remove the Bad driver, first connect the USB cable so windows will make the driver showup in the system properties.

Go to My Computer and Right click and select
PROPERTIES



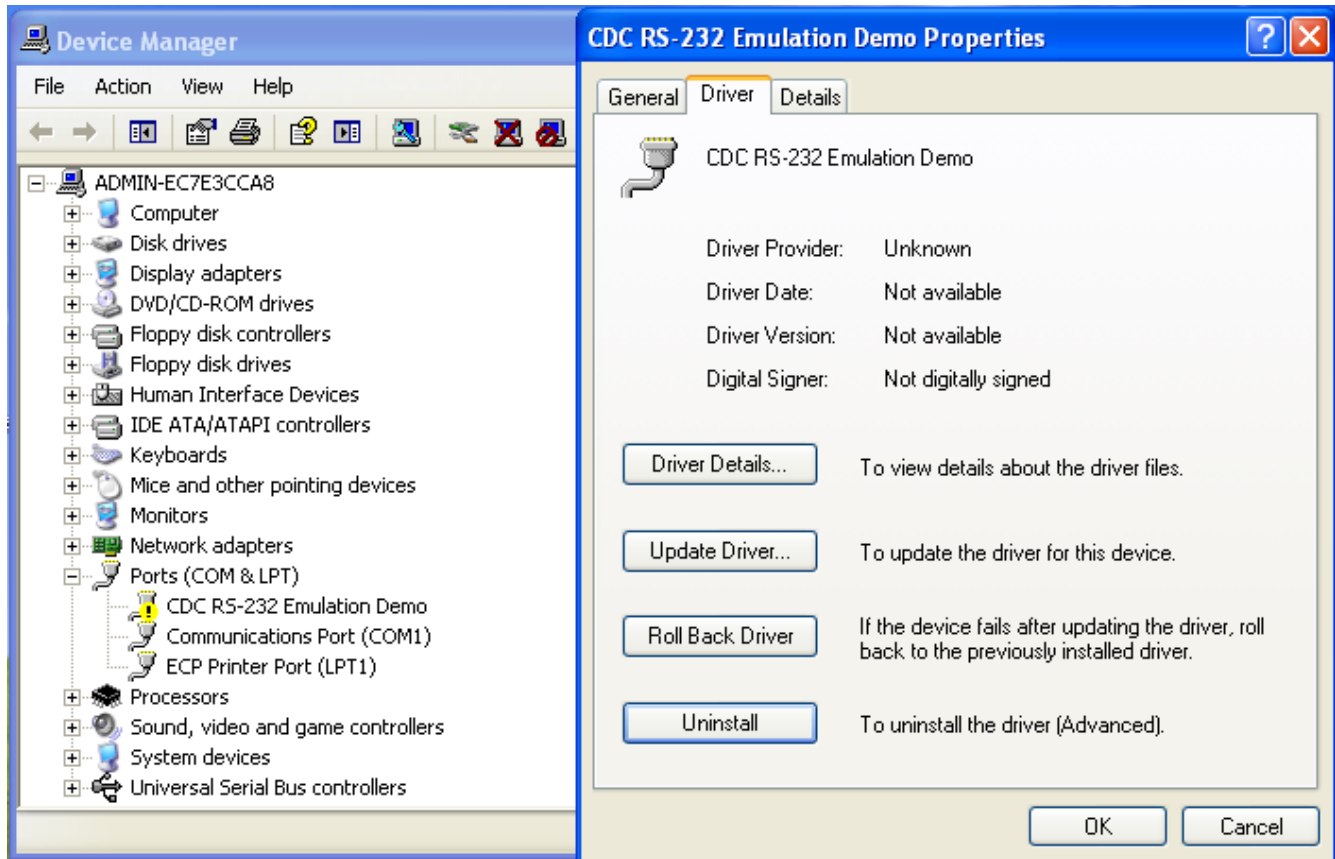
Select the Device Manager



Select and Expand (+) the **Ports** section. Double Click on the driver you want to remove to get the Properties Box.

Click UnInstall to remove the driver. Close all windows.

Then Unplug the USB cable and **REBOOT** the computer.

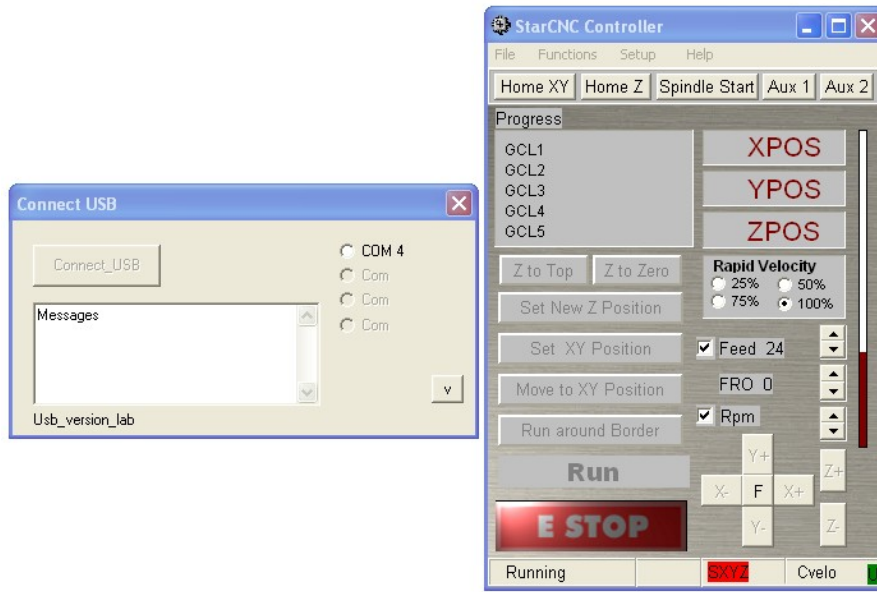


NOTE: Now be sure to Install the StarCNC software (described in a previous section) before plugging in the USB again and install the correct Larken driver (described in a previous section).

Connecting with StarCNC

With the USB cable plugged in (always wait for 20 seconds after plugging in USB cable) load the Lspooler Icon (StarCNC).

It will display a list of Comm ports that may be the CNC controller. (Its up to the operator to pick the one). Usually its the last on the list, if there is more than one.



Select the port and click **Connect** Note the controller power should be turned On. If not turn it on and click **Connect** again.

